

ENERGY LIFECYCLES

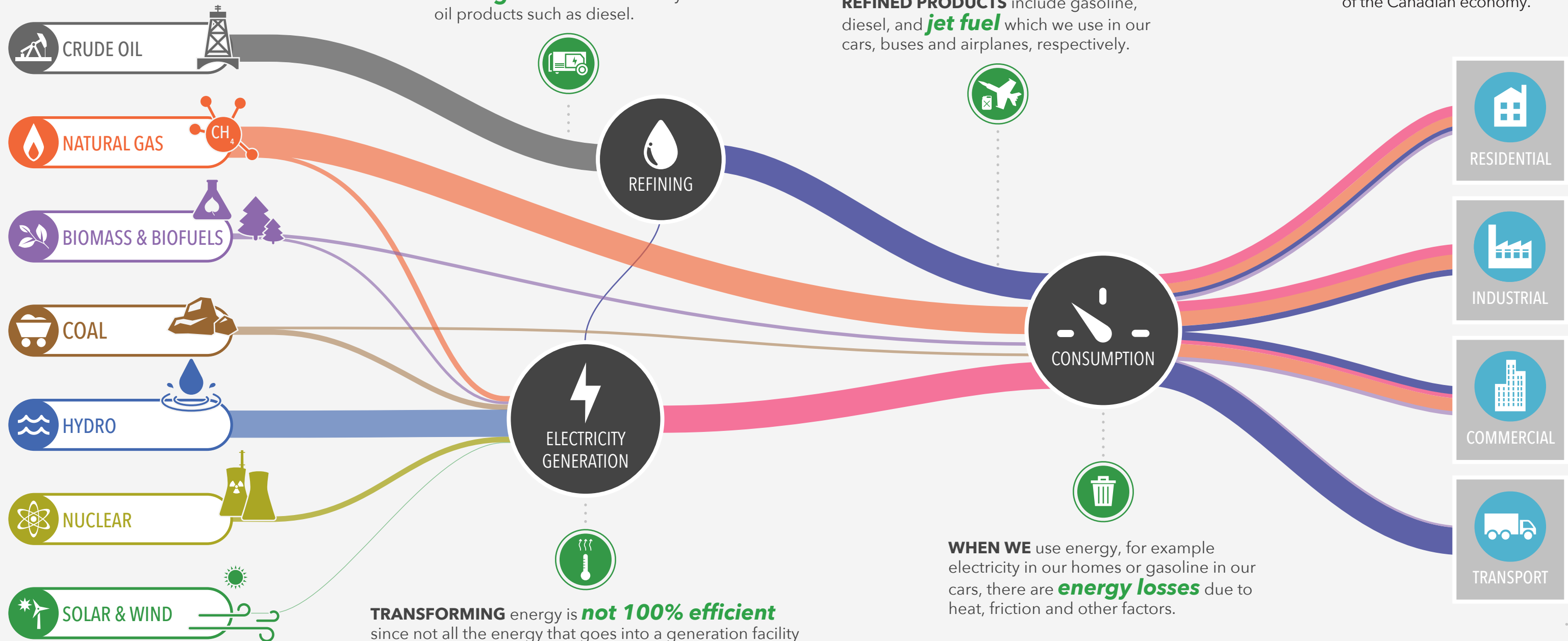
A **SANKEY DIAGRAM** shows the flow of a set of items from one state to the other. The **width** of the lines shows the **relative proportions** of these items.

ENERGY SOURCES come from our **environment**. They can be found buried underground, on land, or in the Earth's natural wind and water cycles.

ELECTRICITY GENERATION in Canada's **north** and in remote communities is often reliant on **small generators** fueled by oil products such as diesel.

REFINED PRODUCTS include gasoline, diesel, and **jet fuel** which we use in our cars, buses and airplanes, respectively.

ALL FORMS OF energy are consumed within the **four sectors**, or large segments of the Canadian economy.



Use the **interactive online tool** to project the future of energy trends in Canada and explore various energy scenarios which involve various cases of **technology development, climate policy, energy prices, exports and pipelines**. Visit www.neb-one.gc.ca/energyfuturesdata